

In this Issue (scroll through):

- **Join the HSA Exec. Board - All Are Welcome!**
- **Travell DEI Committee 21 Day Challenge**
- **Reading Marathon Reminder**
- **Beauty & The Beast Performance Tickets**
- **Green Team Presents: Sports Equipment Swap**
- **Order a Heart Shaped Pizza for ❤️ Day (2/14)**
- **Science Fair - Sign Up (deadline 2/14) & Info**
- **CSA Sign Up (w/Stokes Farm)**
- **Travell Auction (3/9): Tickets and FAQ**
- **International Expo T-Shirt Orders**
- **Yankees Tickets - Sale Ends March 8 (4/7 Game)**



Join the Travell Home & School Association Executive Board

If you are interested in learning more about these open positions and if it might be a good way for you to support your student's educational experience, please reach out to Nominating Committee Chair, Liz Henky: lizhenky@gmail.com

Co-President
VPs of Enrichment
VPs of Fundraising
Treasurer
Assistant Treasurer
Technical Secretary
Recording Secretary

Everyone is welcome and it is a collaborative group who works to get great things done!



TRAVELL DEI COMMITTEE



Travell's DEI Committee welcomes you to join our

21 Day Diversity, Equity, and Inclusion Challenge

Our goal is to take a few moments every day to learn about how DEI impacts us, our children, our families, our community, our workplaces, and the world.

The everyday activity is your own, and once a week we will come together to share what we've found.

Sign up here: <https://bit.ly/4bgLHQB> and we will contact you with the schedule and resources.

Have a question? Reach out to Deb Lee DebLee@gmail.com or Deirdre Byrne Deirdre.byrne@gmail.com.

READING MARATHON

Don't forget to have your student track their reading. All Ridgewood children are eligible to participate in Reading Marathon and ALL reading counts - reading in school, for homework, with an adult or by an adult, even One Book, One School.

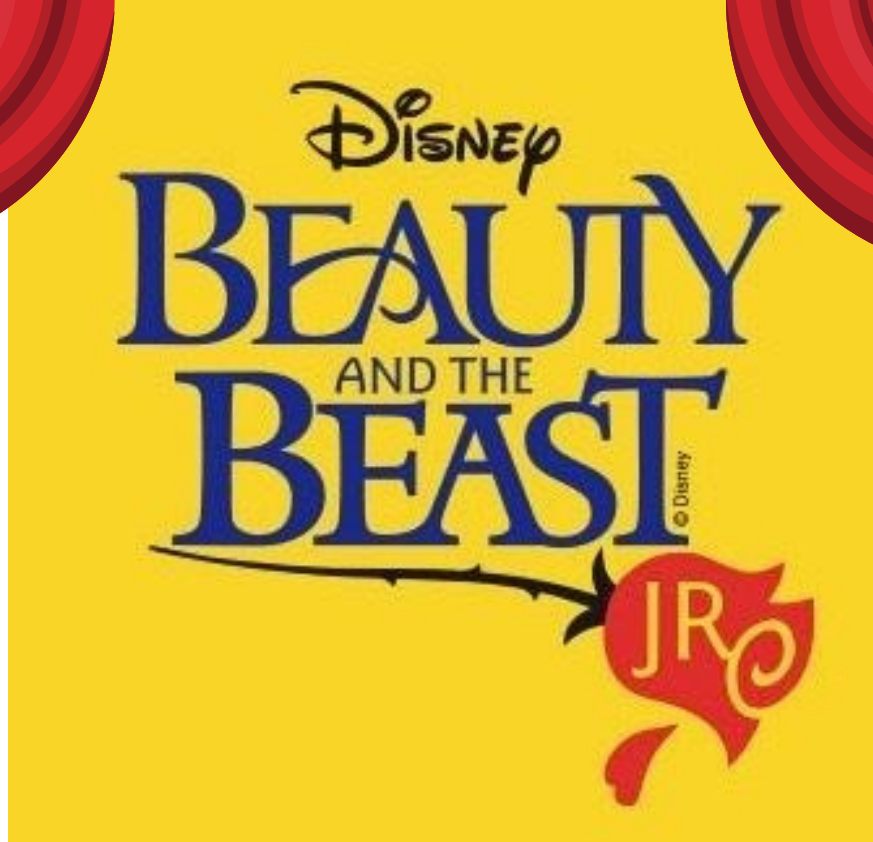


***DON'T FORGET TO
TRACK YOUR READING FOR***

***FREE !!!
ICE CREAM***

Registration at www.ridgewoodlibrary.org is required for most events.

We hope you'll join us! These programs and more are funded by your generous donations to the Reading Marathon.



Travell Drama Club is proud to present Beauty and the Beast Jr.

Tickets available for \$12 in advance or \$15 at the door.

Purchase your tickets [here](#)

DOORS OPEN at 6:30 for ticket holders.

Concessions will be available before and during the intermission.

CASH ONLY.

No water will be sold.

Bring your own refillable water bottle please.

Join all 6 **Elementary Green Teams**
in reducing waste and consumption with our



1st Annual Ridgewood SPORTS EQUIPMENT SWAP

DROP: SATURDAY 3/9 **SHOP:** SUNDAY 3/10

(You'll receive a ticket to shop early on Sunday)

Donate your gently used
sports equipment:

Dropoff: **9am-12pm**

 Hawes Elementary
531 Stevens Avenue

For alternate drop-off arrangements
or questions, email
rwsportsequipmentswap@gmail.com

Shop our inventory
at **NO COST:**

Priority shopping for ticketholders:
10am-11am

Open to public:
11am-2pm

 Hawes Elementary
531 Stevens Avenue



1st Annual Ridgewood SPORTS EQUIPMENT SWAP



DONATION DETAILS

ITEMS WE ARE COLLECTING:

Clean and gently used gear for kids grades K-12

Football: Pads, helmets, footballs

Soccer: Cleats, shin guards, soccer balls

Cheer: Cheer sneakers, uniforms, pom poms

Dance/Gymnastics:

Leotards, dance shoes
(tap, jazz, ballet, hip hop)

Hockey: Pads, skates, helmets, hockey sticks, pucks, gloves

Lacrosse: Pads, helmet, sticks, goggles, lacrosse balls

Baseball/Softball: Bats, mitts, tees, baseballs/softballs

Volleyball: Knee pads, volleyballs

Skiing: Skis, helmets, goggles, ski pants, snowboards, boots, bindings

Other: Racquets, skateboards, ice skates, helmets, basketballs, equipment bags,
golf clubs, goggles and fins, wrist guards, knee guards, rock climbing shoes,
fishing gear, jump ropes, yoga mats

ITEMS WE WILL NOT ACCEPT:

Any items that are well-used,
dance recital costumes,
uniforms and any items
geared or sized to
toddlers/ preschoolers.





TRAVELL SCHOOL HSA
VALENTINE PIZZA FUNDRAISER

ORDER YOUR HEART SHAPED PIZZA
FROM
PARK WOOD DELI

WEDNESDAY, FEBRUARY 14, 2024

PLAIN - \$15.00
PEPPERONI - \$18.00

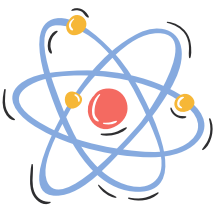
PARK WOOD WILL DONATE \$3.00 FROM EACH
PIZZA ORDERED TO **TRAVELL SCHOOL HSA**

TO PLACE YOUR ORDER CALL

PARK WOOD DELI AT (201) 689-0855
MENTION "**TRAVELL VALENTINE PIZZA**"

ALL ORDERS MUST BE PLACED BY
WEDNESDAY AT 10:00 AM

EMAIL [KATE.SEMENIAK@GMAIL.COM](mailto:kate.semeniak@gmail.com) WITH QUESTIONS



Travell Science Fair 2024

Info Packet

We invite everyone to participate in the upcoming Science Fair.

Please complete the online [student signup](#) form.

(Click on the blue link above to access the Google Form)

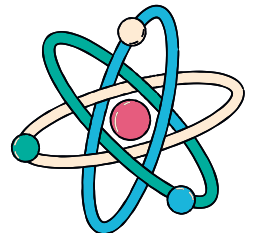
**Registration due by Friday,
February 14, 2024**

Save the Dates & Times!

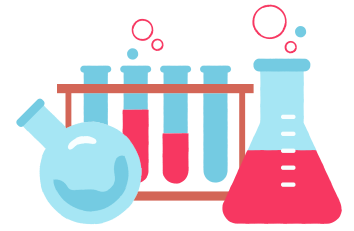
**Project dropoff at the gym at Travell:
Thursday, February 29, 4:30 – 6pm**

Friday, March 1, 6:15 – 8:00pm -- Family Visits

- **Grades K-2 from 6:15 –7:00pm**
- **Grades 3-5 from 7:15– 8:00pm**



Travell Science Fair 2024



Dear Parents,

This letter is to inform you of the setup and breakdown procedures for the Science Fair. Please follow the directions to ensure a smooth and efficient dropoff and pickup of Science Fair projects.

● **Projects are to be dropped off at the Travell gym from 4:30–6pm on Thursday, February 29.** T-shirts will be delivered via classrooms by Thursday morning.

● Please set up your project on your child's grade-level table in the gym.

● Students please wear Science Fair T-shirts for school on March 1.

● Students can have partners but each student must sign up in order to receive their Science Fair T-shirt.

● **ALL PROJECTS MUST BE MOUNTED ON STURDY MATERIAL, SO THEY CAN STAND ON THEIR OWN!** (e.g. tri-fold, corrugated cardboard, or foam core presentation board, available at stores like Staples)

All classes at Travell will view projects during the day on Friday, March 1. Parents are invited to view projects on Friday from 6:15 – 8:00pm.

Grades K-2 from 6:15 – 7:00pm

Grades 3-5 from 7:15 – 8:00pm

All projects MUST be taken home Friday, March 1, after the family visits at 7:15 pm or 8:00 pm depending on your grade time slot. There is no storage available, so please pick-up projects promptly. You can show your project at Super Science Saturday at the RHS: supersciencesaturday.org

Science Fair RULES:

- No fire or any type of open heat source
- No live animals or insects
- No dry ice
- No dangerous or poisonous chemicals (including acetone in nail polish and nail polish remover) (White vinegar and lemon-juice **are** allowed.) No food, candy or giveaways allowed during the school day
- Food can be part of the experiment
- No quizzes or contests can be a part of a project
- Please choose age-appropriate projects

Projects that do NOT adhere to these safety guidelines will NOT be allowed at the Science Fair. There are NO exceptions.

Web RESOURCES:

<http://supersciencesaturday.org/> (Look under "Kidzone")

<http://www.kids-science-experiments.com/>

<http://www.pbskids.org/zoom/activities/sci/>

<http://www.all-science-fair-projects.com/>

<http://www.sciencebuddies.org/>

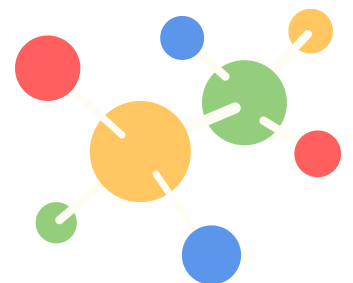
<https://sciencebob.com>

<http://eastern.scifairs.k12.nf.ca/>

<http://school.discoveryeducation.com/sciencefaircentral/>

Thank you very much for your participation. Please contact us if you have any questions.

Madonna Manneh and Beenu Chaturbedi
Science Fair Chairs
sciencefairtravell@gmail.com



Email

travellcsa@gmail.com
for more info

TRAVELL GREEN TEAM
CSA WITH
STOKES FARM



Feeding your family is hard, make it easier with a farm, fresh CSA box! Travell Green Team has partnered with Stokes Farm for our 3rd year to bring you delicious, local produce. Each produce box is filled to the brim with vegetables picked that day, guaranteeing immense flavor and freshness.

**22 WEEKS JUNE
THROUGH OCTOBER**

Sign Up



PLEASE JOIN
TRAVELL HOME & SCHOOL ASSOCIATION
FOR

*An Elegant Whimsical
Evening...
The Terrace
at Biaggio's*

MARCH 9, 2024

7:30-11:30PM, BIAGGIO'S

\$125 PER TICKET (AS OF FEB 1)

Buy Your Tickets Here



FAQ

What is the Travell HSA Auction?

The Travell HSA Auction is a biennial fundraising event hosted by the HSA with a goal of raising funds to support Travell Elementary School. The funds raised from this event help pay for a multitude of programs and enrichment activities such as assemblies, field trips including buses, One School One Book, the 5th Grade Circus and Mayfair just to name a few. Funds raised through the HSA also go towards improving the overall experience for Travell students and faculty and staff.

That's great, but really...what is it?

It's a fun night out with friends and a chance to meet some other parents who live in the community. It's also an excuse to get dressed up and have a night out...including a sit down dinner and plenty of dancing. Oh, and also an auction!

What kind of auction?

The auction will have a few components. There will be a live auction (you get to shout out bids), a silent auction (no shouting, unless you win), a tricky tray (you can shout if you want to) and a 50/50 raffle (you can half shout).

What kind of stuff is being auctioned off?

LOTS of stuff! The auction committee has worked tirelessly to secure hundreds of donations of goods and services from local businesses all around the area. Some of the items up for auction include sports tickets and merchandise, golf lessons, Spa gift certificates, overnight stays, teacher experiences and much much more!!!

I might have something to donate, could I make a donation?

YES! The more items up for auction the more fun the auction is. If you have a good or service you'd like to donate, please reach out to Travellhsaauction@gmail.com.

Is there a theme and dress code?

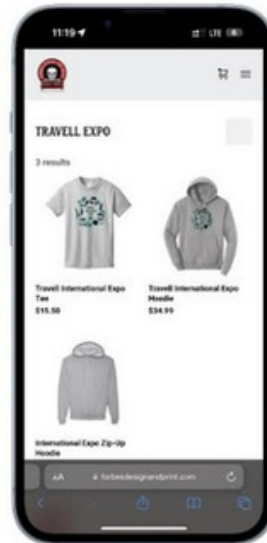
The theme for the evening is "Elegant and Whimsical" so please dress elegant and whimsical. Or at least somewhat elegant and whimsical...Maybe just somewhat elegant?

What if I have more questions?

Any further questions feel free to reach out to the auction committee at Travellhsaauction@gmail.com. And be sure to check Groupspot and eNews for further updates on the auction as well as all things Travell.

INTERNATIONAL EXPO STORE

TRAVELL EXPO FUNDRAISER



OPEN THE CAMERA APP
THEN TAP THE SCREEN TO SCAN!

PLEASE SELECT TRAVELL AS THE PICK UP LOCATION

WWW.FORBESDESIGNANDPRINT.COM/SHOP/TRAVELL-EXPO/26



<https://www.forbesdesignandprint.com/shop/travell-expo/26>

**STORE CLOSSES AT 11:59PM ON FEB 8TH
ORDERS WILL BE AVAILABLE FOR PICK UP BY
MARCH 1ST**

TRAVELL.INTL.EXPO@GMAIL.COM

TRAVELL HSA
PRESENTS



Yankees vs. Toronto Blue Jays

LAST DAY TO
BUY IS
MARCH 8

SATURDAY, APRIL 7 - 1:00PM

**YANKEE STADIUM
FIELD LEVEL (SECTION 134)
\$100 PER TICKET**

*Each ticket includes a new Yankees Backpack
and \$15 food voucher.*

*Seats will be near our friends attending from
Hawes and BF - the more, the merrier!*

[PURCHASE TICKETS HERE](#)

ALL PROCEEDS BENEFIT TRAVELL HSA SPONSORED ENRICHMENT PROGRAMS.

*Please note, the RBSA opening day parade and activities are scheduled for
Saturday, April 20, 2024.*



The Ridgewood Special Education Parent Advisory Group (SEPAG) is a state-mandated, district-wide organization that exists to (1) improve special ed in Ridgewood by fostering effective communication with the district; (2) support and educate families; and (3) provide enrichment to special ed students. Go to www.RidgewoodSEPAG.org for resources and information, including meeting recordings, event details, newsletters and more. If you have questions, ideas or concerns regarding special ed programs or policies, email contact@RidgewoodSEPAG.org or fill out the SEPAG's Feedback Form. If you have Travell-specific questions, ideas or concerns, including those relating to sensory and other accommodations at HSA events, you also can email Travell's SEPAG representative(s) at travell@RidgewoodSEPAG.org.

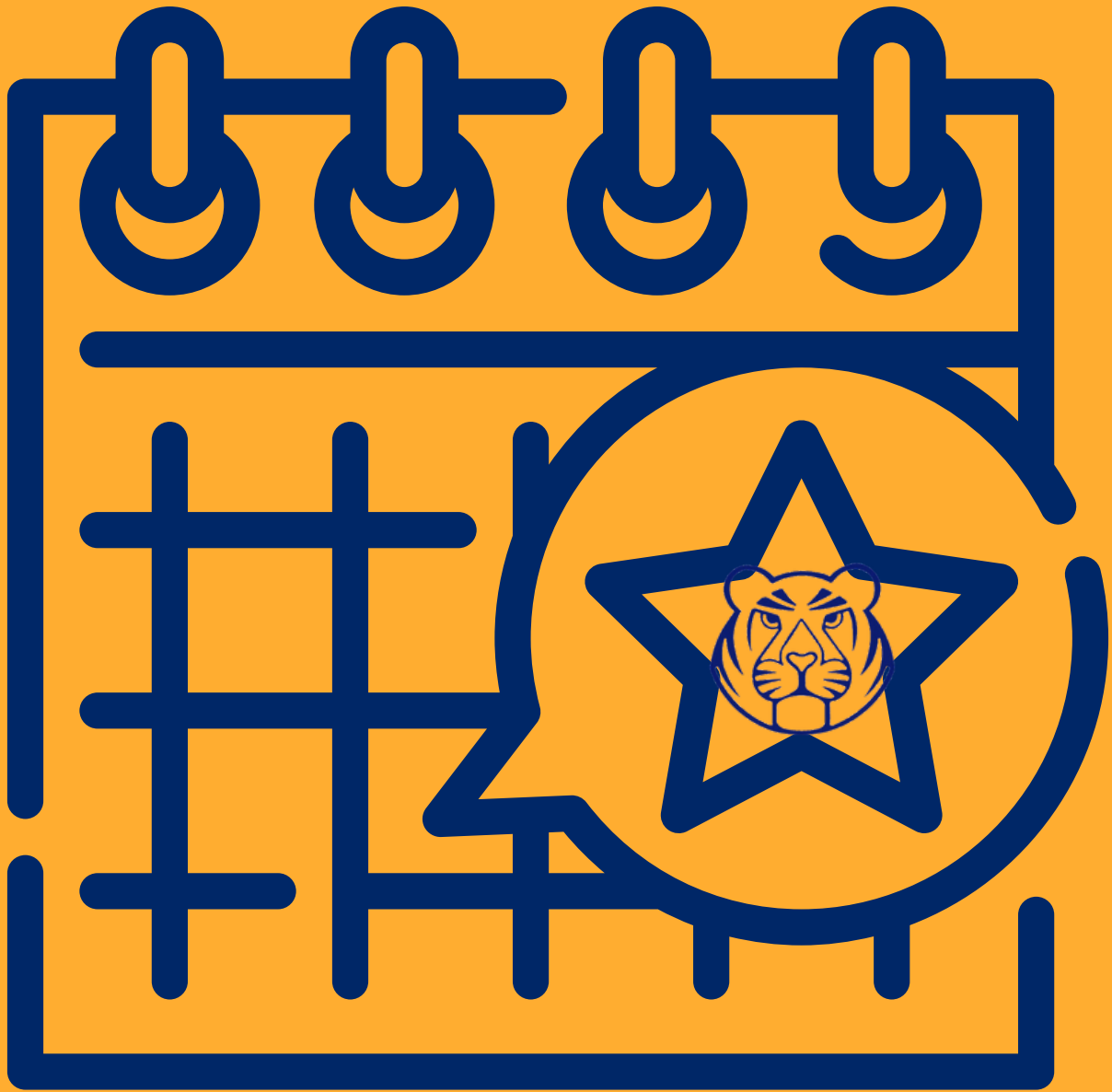
yearbook

**SUBMIT PHOTOS
FOR THE 2023-2024
YEARBOOK!**

*First Day of School, Back to School BBQ...
let's make memories!*

Travellyearbookphotos@gmail.com





Be sure to check the GroupSpot calendar feed for important dates such as General HSA meetings, no-school-days, deadlines, etc.